

1800 VA
150/300 VAC



Standard Features:

- Transient/Waveform Generator
- UPC Manager Software Suite
- LabView™ and LabWindows™ Drivers
- 22 Waveform Library
- 15 to 1,200 Hz full power operation
- 5,000 Hz small signal bandwidth
- Precision Voltage Programming – 0.10% with CSC referenced to internal metering.
- Precision True-RMS metering of volts, amps, and power for displays and reporting
- RS-232 Interface
- 1 Phase/2 Phase selectable output from front panel or bus command
- 99 steady-state programs with associated transients for static and dynamic test applications

Available options:

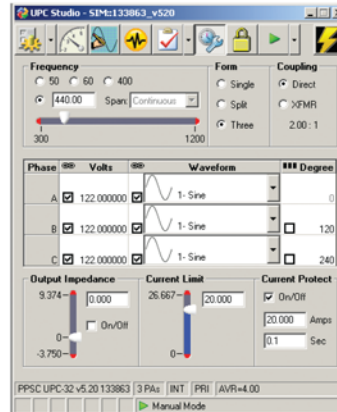
- GPIB (IEEE-488.2) Interface
- Programmable Output Impedance
- Harmonic Analysis (FFT) and Waveform Synthesis.
- Avionics Test Sequences (ABD0100, DO160, A350)

Included with standard delivery:

- AC Power Source
- Rack mount kit
- English manuals
- UPC Studio Software
- LabVIEW™ and LabWINDOWS™ Drivers
- Compliance Certificate with test data
- CE Conformity Document

The **Model 118-ACX** is the latest addition to the Pacific Power Source line of Manual and Programmable AC Power Sources. Power conversion is achieved by high frequency pulse width modulation, resulting in cool, quiet and efficient operation. The 118-ACX is ideal for AC test, frequency conversion, laboratory and bench-power applications. Equipped with the UPC-1 programmable controller, the 118-ACX becomes a powerful AC Power Source and Power Analyser for today's testing needs.

UPC Manager Software Suite



Master the Power of the Wave!

UPC Manager Software gives you the tools necessary to quickly and easily operate your AC Power Source. With our complete, graphical interface, control all areas of your AC Power Source testing with simple presets, user prompts, test sequences, test plans and custom reports.



THE POWER OF EXPERTISE



FREQUENCY CONVERSION

AEROSPACE

R & D

MILITARY

MANUFACTURING

CUSTOM

AC Output Specifications

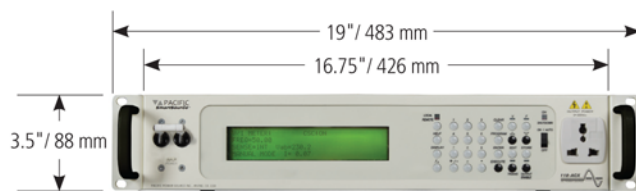
OUTPUT FREQUENCY	15 to 1,200 Hz. Full Power.
LOAD REGULATION	0.25% 15 to 400 Hz. Improves to less than 0.1% with external sense and CSC enabled.
OUTPUT DISTORTION	0.25% THD _{AVG} 15 to 200 Hz. 0.50% THD _{AVG} 200 to 1,200 Hz.
RESPONSE TIME	60 µsec typical, 10–90% load step.

Measurements

VOLTAGE (True RMS)	Range 0-354 VAC _{rms} Resolution 0.1 VAC to front panel. 0.001 VAC to remote interface. Accuracy ±0.2% of range +cal.ref.
CURRENT (True RMS)	Range 30Arms Resolution 0.01A to front panel. 0.001A to remote interface. Accuracy ±0.2% of range +cal.ref.
POWER	Measures True Power (kW), Apparent Power (kVA) and power factor. Range 10680 W Resolution 1.0 watts or VA to front panel. 1.0 watts or VA to remote interface.
POWER/CREST FACTOR	Calculated and displayed to three significant digits.

Mechanical Specifications

HEIGHT	3.5" / 88 mm (2U)
WIDTH	16.75" / 426 mm, excluding rack kit
DEPTH	23.62" / 600 mm, excluding rack kit
WEIGHT	44lbs. / 20 kg
COOLING	Side intake with rear exhaust. Automatic Fan Speed Control for low acoustic noise and extended fan life.



The 118-ACX is designed for bench top or 19" equipment rack operation.
Shown with provided rack mount handles.



17692 Fitch, Irvine, CA 92614 USA

Phone +1 949.251.1800

Fax +1 949.756.0756

800.854.2433

E-mail sales@pacificpower.com

www.pacificpower.com

© 2010 Pacific Power Source, Inc.
Subject to change without notice. #2ACXDS1010

Parameter Settings

FREQUENCY	Range 15 to 1,200 Hz. Resolution 4 significant digits, e.g. 50.00, 400.0, etc. Accuracy ±0.01%, 15 to 1,200 Hz.
VOLTAGE	Range 0 to 300V _{RMS} Resolution 0.1 VAC steps. Accuracy ±0.2% of range +cal.ref.
CURRENT LIMIT	Range 0 to 50A peak max Resolution ±0.05% Accuracy ±3%, FS
WAVEFORM LIBRARY	The UPC programmable controller contains waveform libraries which store 22 executable waveforms in Non-Volatile RAM. Waveforms are editable via the front panel, bus command or using the software UPC Studio.

General Specifications

OPERATING TEMP.	0-55° C
RELATIVE HUMIDITY	0-95% (non condensing)
CERTIFICATION	CE, ETL

Input Power

INPUT VOLTAGE	1 Phase, 100–240 VAC ± 10%
INPUT CURRENT (at full rated load)	20A @ 120V 10A @ 230V
INPUT PF	>0.98
INPUT FREQUENCY	47–63 Hz

External Inputs/Outputs

EXTERNAL SENSE	Standard
AUX INPUTS	±10 Vpk (20Vpk-pk) AC-coupled input algebraically summed with oscillator signal.
AM INPUTS	±10 VDC input modulates the output voltage ±100%.
SYNC OUTPUTS	TTL signals are provided to synchronize external test equipment to the power source output. 1. Zero Crossing, Phase A. 2. Transient Pedestal – gate signal which is true during the entire transient event. 3. DRM – High-speed clock that is a multiple of the fundamental output frequency used to synchronize sub-cycle events.

Interface and Software Options

RS232 (standard)	SCPI Commands, Baudrate up to 38.4 kBps
G	GPIO Interface, IEEE488.2 (replaces RS232)
PZO	Programmable Output Impedance Option
HAS	Harmonics, Analysis and Synthesis Option
IM	Inrush Meter Option
UPC-Test Manager	License for Software UPC-Test Manager
DRIVERS	LabView™ and LabWindows™ drivers free of charge
ABD0100	License for Avionics Test Sequences according norm ABD0100.8.1. Requires UPC-Test Manager Option.
A350	License for Avionics Test Sequences according norm Airbus A350. Requires UPC-Test Manager Option.
DO160	License for Avionics Test Sequences according norm DO160 Version E and F - Requires UPC-Test Manager Option.