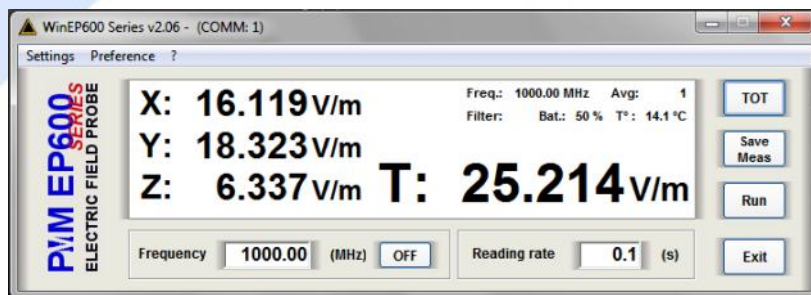




PMM EP-603

USB/RS232 Electric Field Probe, 18 GHz



The all-in-one that sets the standard for miniature optically coupled broadband E-field isotropic probes

Main features

- 300 kHz to 18 GHz frequency range
- 60 dB dynamic range: 0,17 -170 V/m
- Symmetrical dipole configuration for outstanding isotropy
- Up to 40 meters communication by Fiber Optic Cable
- Up to 80 hours of operation before recharging
- High performance, high reliability Li-Mn battery replaceable without needing re-calibration
- PC direct connection via Optical to RS232/USB adapters
- Only 53 mm overall size
- Extremely lightweight: 25 g only!

Exceptionally small-sized spherical symmetrical configuration, lightweight and miniaturized electronics combined with excellent RF characteristics make the PMM EP-603 RF Electric Field Probe the ideal solution for all EMC/EMI applications (chambers and TEM/GTEM cells), biology, materials research and wherever fast and accurate measurements with negligible or minimum interference of the probe to the field under measure are essential. Accredited calibration available.



EP-603 mounted on RF-transparent holder tip

Specifications

Frequency range	300 kHz – 18 GHz
Flatness	Frequency correction OFF 3 – 8200 MHz: 1,4 dB 1 – 12000 MHz: 2,4 dB 0,6 – 18000 MHz: 3,8 dB
	Frequency correction ON, typical 0,3 – 18000 MHz: 0,4 dB
Dynamic range	0,17 – 170 V/m 60 dB single range
Linearity	0,4 dB @ 50 MHz / 0,3 – 170 V/m
Overload	> 350 V/m
Resolution	0,01 V/m
Sensors	Six monopoles
Isotropy	0,4 dB (0,2 dB typical) @ 50 MHz
Measurement mode	X – Y – Z axis simultaneous sampling
Sampling rate	22 to 0,03 S/s depending on filter setting
Digital filtering	2,3 to 28 Hz, low-pass and notch 80 dB @ 50/60 Hz
Averaging	1 to 64
Internal battery	3 V – 5 mA/h, Li-Mn rechargeable
Operation time	80 hours @ 0,4 S/s, 28 Hz filter 60 hours @ 5 S/s, 28 Hz filter
Recharging time	48 hours for full operation time 12 hours for 31 hours operation (0,4 S/s, 28 Hz filter)
Internal data memory	Serial nr.; Calibration factors & date; Firmware version
Communication	Bidirectional fiber optic link
Fiber optic connector	HFBR-0500
Fiber optic length	10 m, standard 20/40 m options
Fiber optic to PC connection	Fiber optic to RS232 converter RS232 to USB converter
PC software	Display of field strength, temperature, battery status Setting of filters, sampling rate, frequency Manual data logging as text file
Operating temperature	-10 ÷ +50 °C
Temperature reading resolution	0,1 °C
Battery voltage reading resolution	10 mV
Dimensions	53 mm overall (body: 17 mm dia.; sensor, 17 mm each)
Weight	25 g, incl. 1 m fiber optic pigtail
Probe holder tip	¼ 20 UNC female

Ordering information

EP-603 Field probe 300 kHz - 18 GHz 0,17 - 170 V/m

Supplied with:

- 10 m fiber optic cable
- Optical/RS232 adapter + RS232/USB adapter
- PC Utility WIN-EP600
- Charging fixture, AC charger, tripod mounting tip
- Standard calibration certificate

Options:

- FO-EP600/20 Fiber optic cable, 20 m
- FO-EP600/40 Fiber optic cable, 40 m
- Accredited calibration certificate



* Names and Logo are registered trademarks of Narda Safety Test Solutions GmbH and L3 Communications Holdings, Inc. – Trade names are trademarks of the owners.

Narda Safety Test Solutions Srl
Via Leonardo da Vinci, 21/23
20090 Segrate (Milano) - ITALY
Phone.: +39 02 269987-1
Fax: +39 02 269987-00
support@narda-sts.it
www.narda-sts.it