

## Cable Guide Rail CGR 5.4

### Technical Data

Moving range	5.4 m (without clamp)
Total measurement length	6.0 m (with clamp)
Overall length	6.2 m
Track height	0.8 m above floor
Permissible load	15 kg
Material	Plastic + reinforced fibreglass,
Cross-section	0.1 m x 0.1 m
Base L x W	0.3 m x 0.3 m (with supporting pillars)
Positioning speed adjustable between	5.0 – 30.0 cm/s
Positioning accuracy	better +/- 1 cm
Rail Drive	Antistatic toothed belt (non-metallic)
Motor	Brushless DC motor 150 W
Drive unit	shielded and radio interference suppressed
Control cable	Fibre optic lines
Remote control via	IEEE interface
Current consumption	max. 2A
Voltage	208-230 VAC, 50/60 Hz, single phase
Temperature range	-10 °C...+35 °C
Total weight	55 kg
Accessories	<b>Interface for SCU/MCU Controller</b> 3 m power supply cable Service manual



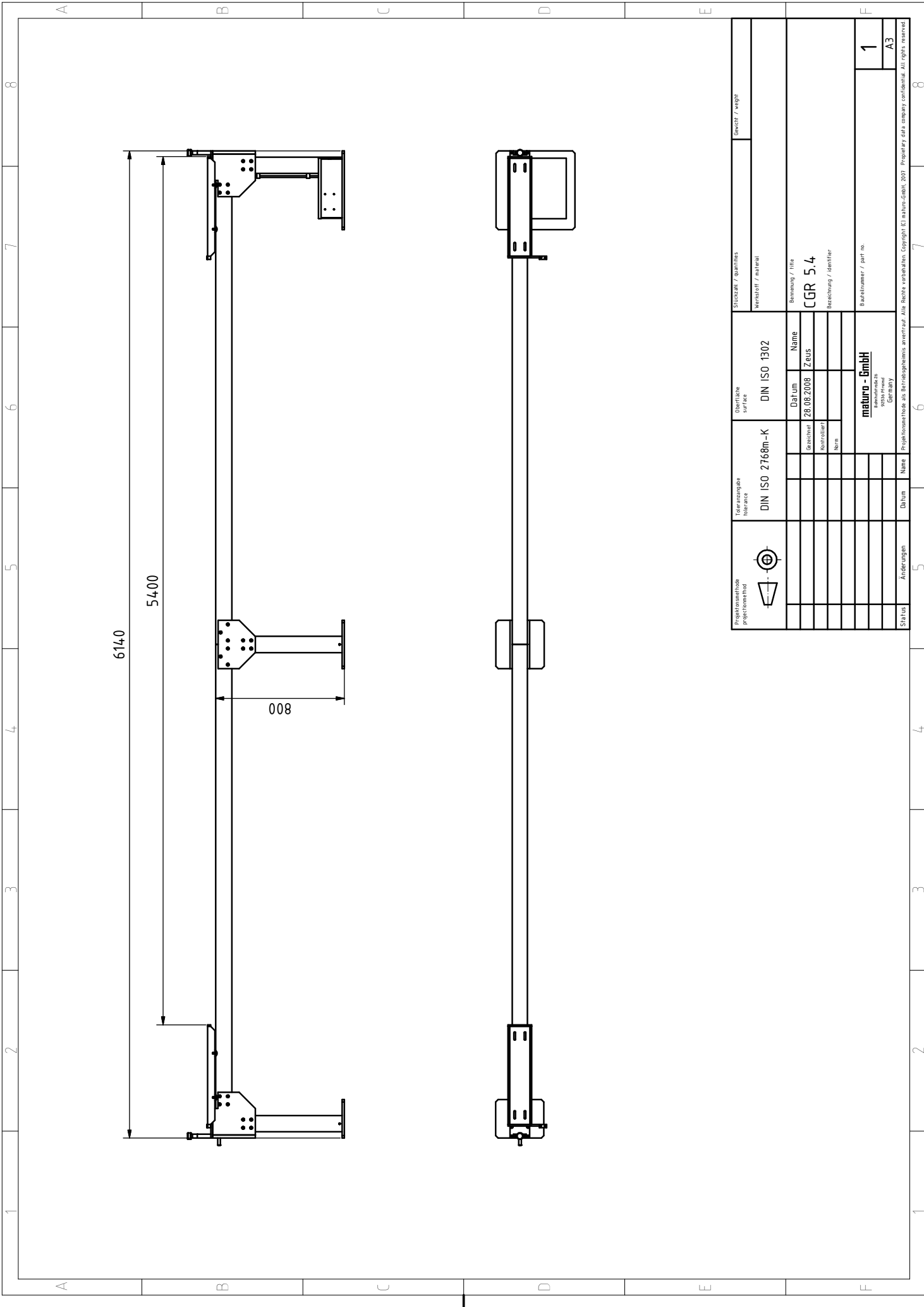
### Brief description

The **CGR 5.4** cable measuring guide rail, with the exception of the drive unit, is fabricated from plastic (PVC and reinforced fibreglass). Metal parts are located only in the base plate and the drive mechanism (max. 0.3 m above ground level).

The Cable Guide Rail is used for the remotely-controlled positioning of an absorbing clamp along an electric cable. Automatic measurement of the RFI power according to CISPR, EN, ANSI, VCCI and VDE standards are possible.

The **IEEE 488.2 (GPIB) bus** provides an additional control option for all functions, when operated with the **SCU/MCU Controller**.

Information presented enclosed is subject to change as product enhancements are made regularly. Pictures included are for illustration purposes only and do not represent all possible configurations.



Projektionsmethode projection method 	Toleranzangabe tolerance DIN ISO 2768m-K	Oberfläche surface DIN ISO 1302	Stückzahl / quantity quantity / weight	
			Werkstoff / material material / weight	
Projektionsmethode als Betriebszeichnung anerkennen recognize as operating drawing matura - GmbH Industriestraße 42699 Solingen Germany	Datum date 28.08.2008	Name name ZEUS	Benennung / title title / weight CGR 5.4	
			Bezeichnung / identifier identifier / weight 1	
Status status Änderungen changes	Datum date	Name name	Bezeichnung / identifier identifier / weight A3	

Copyright © matura GmbH, 2007. Proprietary data company confidential. All rights reserved.