

Motor Test Systems

Low & High Power AC/DC Motor Test Systems

■ HAEFELY HIPOTRONICS has been the leading manufacturer of complete AC and DC motor test systems since 1962. Our experience over the past 50+ years has enabled us to develop the most reliable and efficient test systems on the market. All of our manufacturing is done in-house to provide the highest level of quality. Our standardized design, patented Peschel Variable Transformer (PVT), and rugged motorized tap switches provide years of operation with minimal maintenance.

Our test sets include a 10 inch (25cm) color touch screen controller with intuitive menu functions. A standard digital tachometer and wattmeter allow for conveniently displayed measurements on the control interface, as well as temperature and power factor metering. Fast and easy test reports can be generated using data acquisition software on any computer.



We are a proud member of The Electrical Apparatus Service Association (EASA). EASA provides members with a means of keeping up to date on materials, equipment, and state-of-the-art technology.



FEATURES

- ☑ **Measurement Devices** included with all models:
 - Digital Tachometer
 - Digital Wattmeter
 - Temperature Meter (Type – E)
 - Power Factor Meter
 - Data Acquisition Software
- ☑ **Emergency OFF switch** and warning lamp for increased safety
- ☑ **Control power circuit breaker**
- ☑ **Motorized tap selector switch** decreases start up time
- ☑ **Primary overload protection**
- ☑ **Digital voltage and current meters** for accurate measurements
- ☑ **Interlocked HV taps** increase user safety
- ☑ **Lifting provisions (crane and forklift)**
- ☑ **External Interlock provisions**

BENEFITS

- Variable transformer offers the most **stable output** available.
- Continuous variable voltage** from near zero to full voltage.
- Complete metering** to verify conditions of motor under test.
- Decreased startup cost** with minimal mains wiring required.
- Motorized tap switch uses the **latest technology** to ensure reliable and accurate testing.
- Touch screen PLC controls** require minimal user training.
- Patented PVT design allows for **smaller footprint** and **fewer moving parts**.
- Integrated **safety and overload protection**.

TECHNICAL SPECIFICATIONS

Model	MTC-150	MTC-300	MTC-500	MTC-750	MTC-1000V	MTC-1500V	MTC-2000V
System KVA	150	300	500	750	1000	1500	2000
Input Voltage (V)	480V, 3p	480V, 3p	480V, 3p	480V, 3p	480V, 3p	480V, 3p	4160V, 3p
Input Current (A)	200	400	600	1000	1250	1850	280
AC No-Load test Capabilities (HP)*	750	1500	2500	3750	5000	7500	10000
AC Full-Load Test Capabilities (HP)*	150	300	500	750	1000	1500	2000
Duty Cycle AC Supply	Continuous, 110% 1 Hour on / 1 Hour off, 250% for 1 minute						
Output Tap							
0 to 240V	360A	N/A	N/A	N/A	N/A	N/A	N/A
0 to 480V	180A	360 A	600 A	900 A	1000A	1000A	N/A
0 to 600V	144A	289 A	480 A	720 A	960A	1000A	1200A
0 to 1200V	72A	144 A	240 A	360 A	480A	720A	960A
0 to 2400V	36A	72 A	120 A	180A	240A	360A	480A
0 to 3300V	N/A	52 A	87 A	130 A	175A	262A	350A
0 to 4160V	N/A	42 A	70 A	104 A	139A	208A	278A
0 to 7200V	N/A	Optional	Optional	Optional	Optional	120A	160A
0 to 11,000V	N/A	N/A	Optional	Optional	Optional	Optional	Optional
0 to 13,800V	N/A	N/A	Optional	Optional	Optional	Optional	Optional
DC Armature Supply							
Voltage (V DC)	0...650	0...650	0...650	0...750	0...750	0...750	0...750
Current (A)	200	425	625	900	900	1200	1500
DC Field Supply	300V, 10A	0 ... 700V DC 90A, 5% Ripple RMS					
Field Supply #2 (optional)	0 ... 12V DC 500A, 48% Ripple RMS						

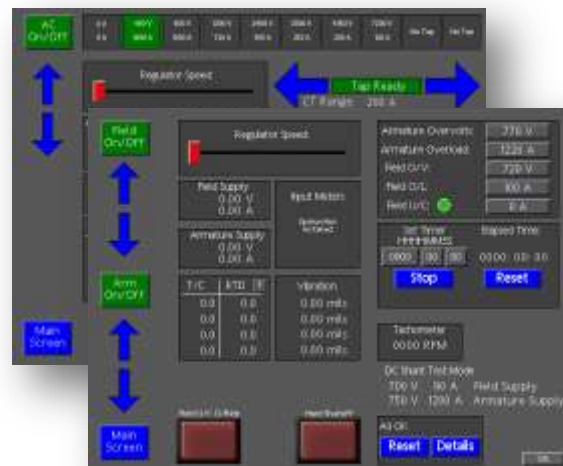
1. The model prefix **MTC** applies to systems with both **AC & DC** testing capabilities.
2. For Motor Test Systems with **AC** capabilities only, the DC specifications in the gray shaded area above are eliminated and model prefix changes to **MTA**.
3. Larger and smaller units may be available upon request.
4. Other input voltages may be available upon request.
5. No-Load and Load calculations are approximate and may vary with each specific customer and application.

OPTIONAL EQUIPMENT & ACCESSORIES

- RTD Temperature Measurement Input
- Boom Arm Output
- Impedance supply
- Vibration Analyzer
- Additional Voltage Taps
- Optional Series Field Supply
- Input Volt and Current Meters



Be sure to download the new *Motor Test Series Product Guide* from our website.



OFFICES:

Europe
Haefely Test AG
Birsstrasse 300
4052 Basel
Switzerland

+41 61 373 4111
+41 61 373 4912
sales@haefely.com

China

Haefely Test AG Representative Beijing Office
8-1-602, Fortune Street
No. 67, Chaoyang Road, Chaoyang District
Beijing, China 100025

+86 10 8578 8099
+86 10 8578 9908
sales@haefely.com.cn

North America

Hipotronics, Inc.
1650 Route 22 N
Brewster, NY 10509
United States

+1 845 279 3644
+1 845 279 2467
sales@hipotronics.com