

Workplace solution primus two



Engineered for innovation.



More space for
your ideas

Engineered for innovation.

Maximum ergonomics
and functionality

New timeless
design concept

Open, innovative
technology



primus two Engineered for innovation.

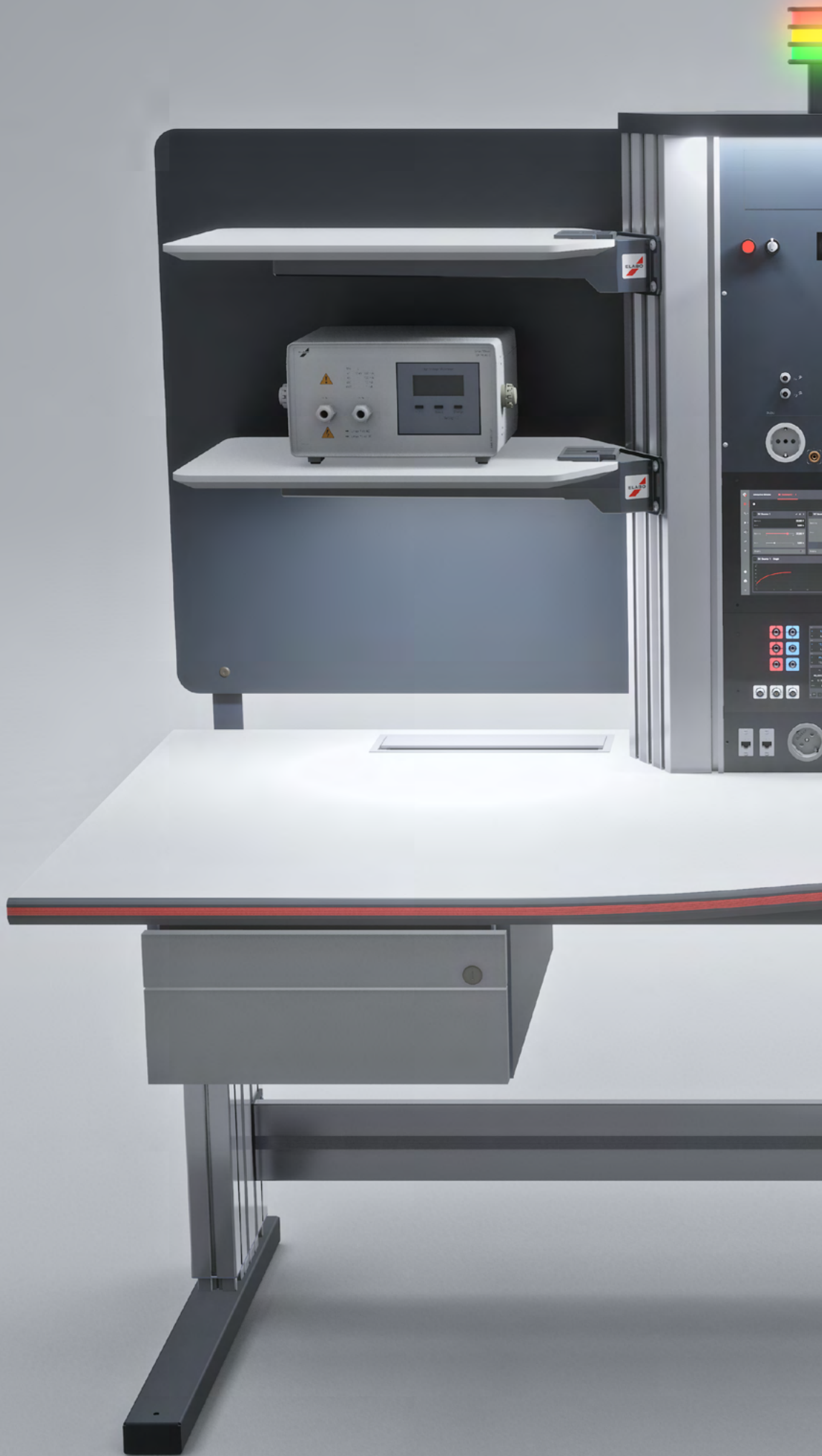
The new primus two workplace system revolutionises work in the electrical laboratory. With a constant focus on the user, primus two combines all aspects that are important for work in the areas of research and development, training, quality assurance or in service:

Functionality, quality, ergonomics and design.

The primus two was developed for innovative people and companies – for those who work and research on the technologies of the future and thus set new benchmarks. Optimal illumination, a central, multifunctional control, a multitude of connection options, flexible

storage surfaces and plenty of space for innovative work – all combined in a modern workplace system made by ELABO.

50 years of expertise on the market perfectly combined: primus two. Engineered for innovation.

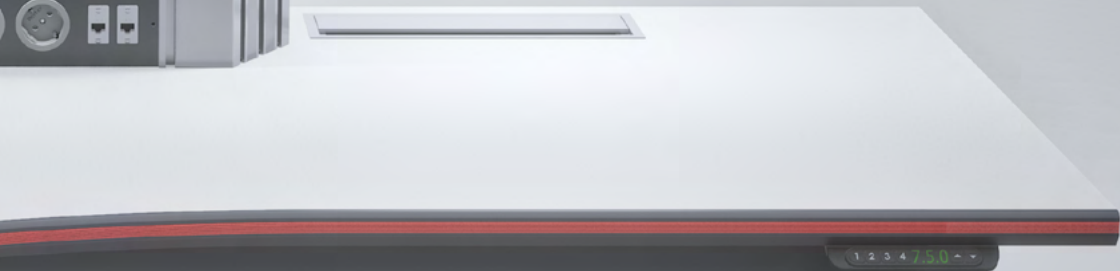




Control panel area featuring a red emergency stop button, a digital display, and various function buttons.



ELADO



1 2 3 4 7.50



The right solution



Individual lighting design

- The innovative LED lighting provides glare-free and homogeneous illumination of the work surface. It always creates a perfect working atmosphere.
- 1 x base light and 2 x board light
- Stepless dimmable from 0..100%
- Colour temperature adjustable from 3000K to 5000K
- board light „invisibly“ integrated into the flex board
- Controllable via the elution two lab



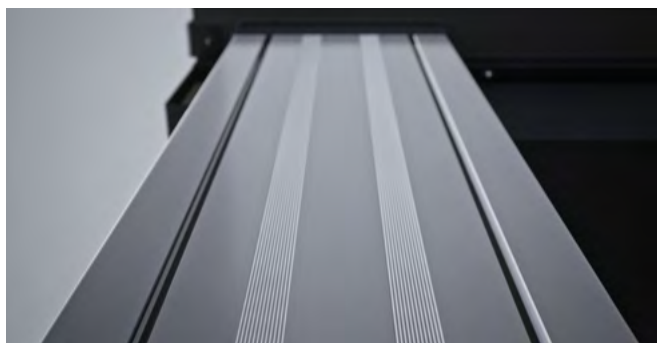
Unrestricted ergonomics

- main base neat and clearly designed
- Compact and extremely user-friendly
- Sufficient free space to work effectively
- flex board allows variable height adjustment left and right
- Self supporting board frame ensures maximum stability



All-round safety

- Modern switch-on panel, clearly arranged and always in the user's focus
- Personal protection systems integrated invisibly but still within reach
- LED status light



Consistent design

- Interchangeable light edges on the system profiles and the table edge stand for the elegant design
- Changeable, ergonomically shaped table edge with innovative colour coding. ESD system tables can for example be equipped with a yellow light edge for clear labelling.
- The new, timeless design concept from ELABO: Innovative, durable, future-proof and elegant



Innovative technology

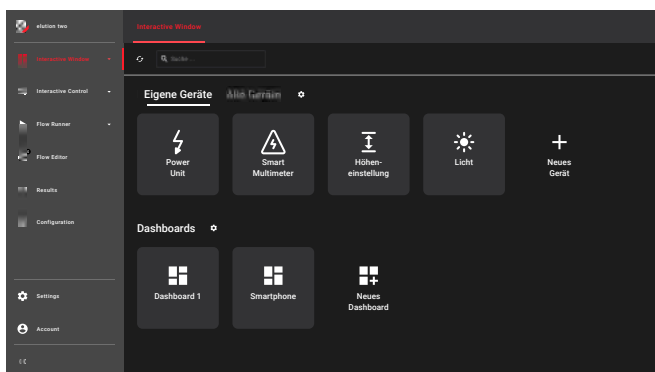


base control

- Ultra-compact Single Board Computer with high performance
- Quad core processor with 1.5 GHz
- 4 GB RAM
- USB / LAN interfaces
- 10.1" display with 1280 x 800 pixels
- Touch sensor
- Chemically hardened and anti-reflective front glass
- Invisible fastening mechanism

power unit

- power unit with innovative pick-up panel
- 4.3" display for showing the current parameters
- Pick-up sockets with intelligent 4-quadrant RGB LED socket illumination for signalling various operating states
- Display parameters are assigned to the pick-up sockets directly via the display in a self-explanatory way.
- The following modules are integrated in the power unit:
 - 3 x DC laboratory power supply unit 48 V / 5 A
 - 2 x highly flexible digital multimeter with parallel current and voltage measurement input
 - Voltage range AC / DC: up to 1000 V
 - Current measuring range AC / DC: up to 20 A
 - Resistance measurement
 - 1 x frequency generator with 40 MHz and frequency counter
- Chemically hardened and anti-reflective front glass
- Invisible fastening mechanism



Innovative laboratory measurement technology with elution two lab

- Platform-independent software built on micro services and offering a wide range of application possibilities
- Application-specific configuration of the software interface possible for each user through intuitive dashboarding
- Browser-based frontend with responsive design and multiple operation function (f. e. computer, tablet, smartphone)
- Open interface technology for the integration of standard measurement and supply technologies
- Workplace management with innovative assistance functions



ELABO telephone centre:

+49 (0) 79 51 / 307 – 0

Or you can send your query by email to: **info@elabo.de**

www.elabo.com

ELABO GmbH, Roßfelder Straße 56, 74564 Crailsheim, Germany

E-Mail: info@elabo.de, Phone: +49 (0)79 51 / 307-0, Fax: +49 (0)79 51 / 307-66